

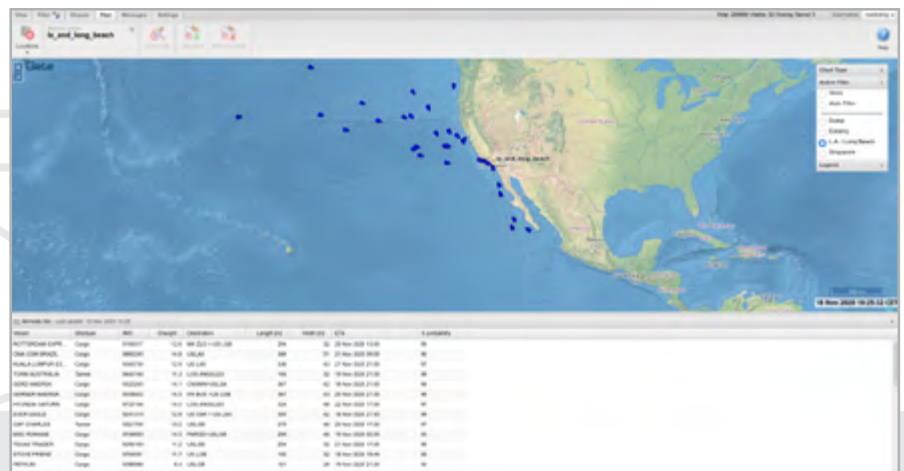
# Destination Predictor

Predict  
vessel  
destinations  
five days  
ahead

## Groundbreaking functionality

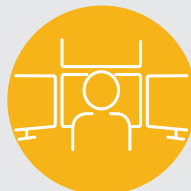
GateHouse Destination Predictor lets you predict vessel arrivals at any given port or sea area. The Destination Predictor is offered as either a Data-as-a-Service (DaaS) solution through an API or as a Software-as-a-Service (SaaS) web interface.

The Destination Predictor provides a probability for any given vessel from a defined source area to arrive at any given location within the next five days. A sophisticated machine learning algorithm takes vessel history, position, SOG, heading, and other parameters into account to provide an arrival probability. Additionally, the service provides you with vessel descriptive parameters available from AIS. A calculated ETA is available for all vessels with an arrival likelihood over 80%. Parameters are updated every 30 minutes.



## Get notified and save time

Every 30 minutes, the service repredicts vessel arrivals to any port or area of interest. Updates are available through a web interface, an API, and via a daily scheduled email.



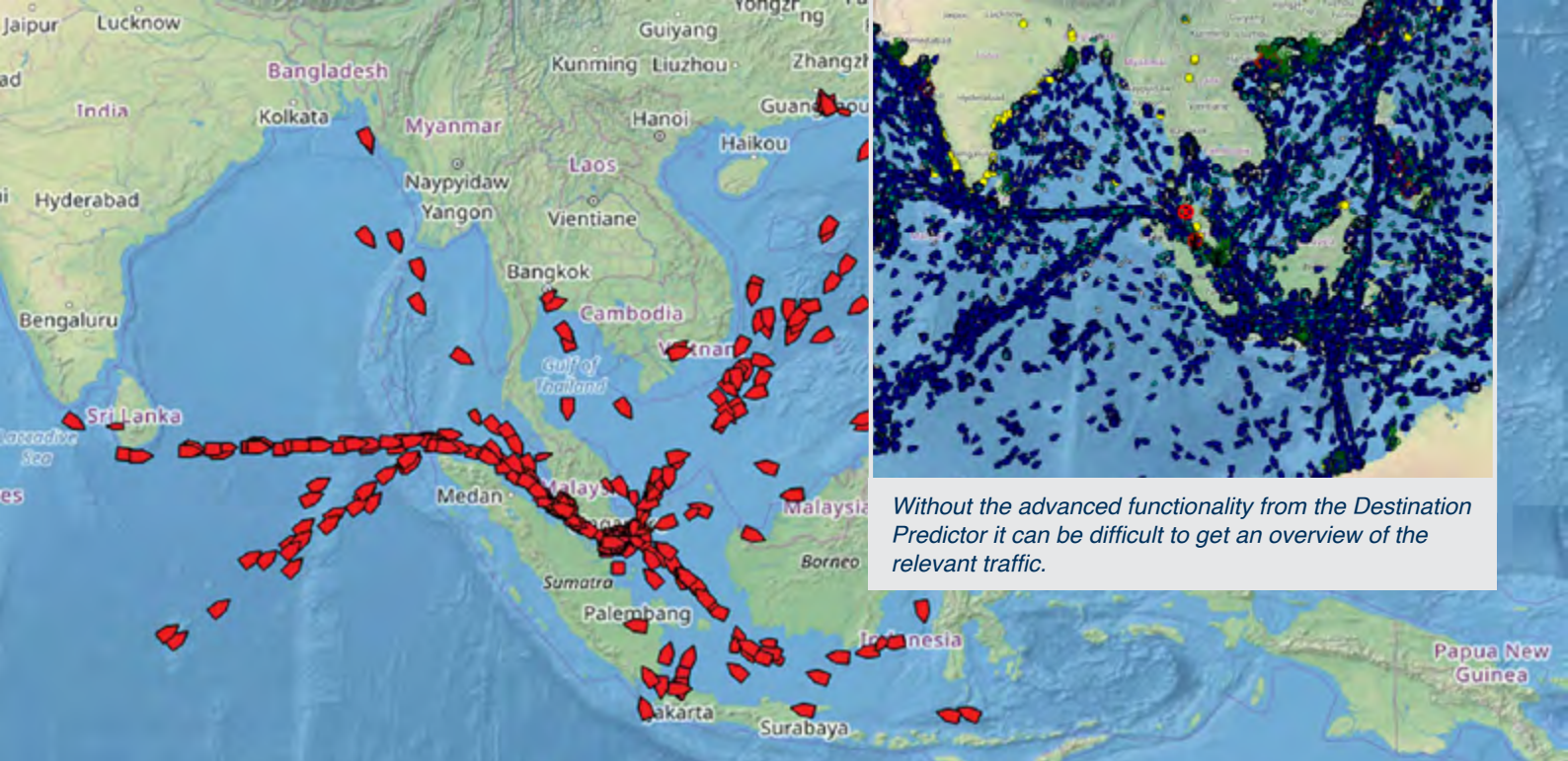
## Personalize your data and act fast

Personalized filters and arrival lists are available through a web interface and an API.



## All data in one place: See it all at once

Receive all important information about a ship and be able to predict the needs of your potential customer.



*Without the advanced functionality from the Destination Predictor it can be difficult to get an overview of the relevant traffic.*

With the Destination Predictor you only see relevant vessels.

### Sophisticated machine learning algorithm

Machine learning and smart algorithms that continuously improve every day. This functionality is what makes the Destination Predictor unique.

With the Destination Predictor, you can automatically identify and track relevant vessels with a high probability of arriving. Focus on your potential and leave out the rest.

The service also answers questions about vessels that will NOT arrive at a given destination. The area of interest can be a port, an anchorage, a strait, or any sea area.

The Destination Predictor service is available through a web interface and a REST API for easy integration

## FEATURES

### Web-interface:

- All predicted vessels on a map (>80% probability of arrival)
- Standard map navigational features like pan and zoom
- Filtering and coloring between the different predicted locations (port or sea area)
- Zoom to specific vessel of interest
- Presentation of vessel AIS parameters in list form
- Presentation of arrival probability and ETA to predicted destination in list form
- Export of predicted vessels to Excel (different locations on different Excel sheet tabs)

- Possibility to schedule a daily email with the Excel attached (time of day is user configurable)
- List of the ten previous port calls
- Optional vessel contact information

### API:

- REST API
- All vessels within the source area are predicted (0-100% arrival probability)
- ETA calculated on vessels with a >80% arrival probability
- Optional webhook API